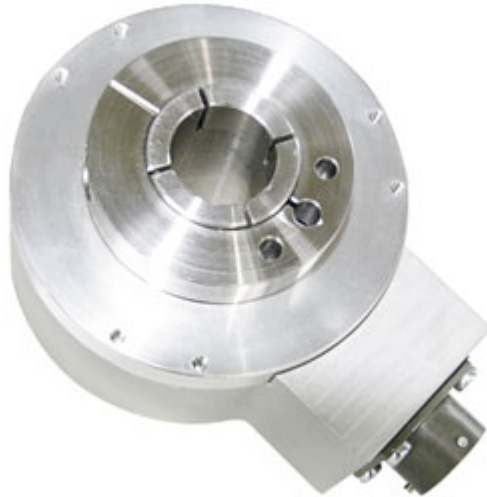




## IXARC Incremental Encoder OCD-INH00-XXXXX-T250-PRL



The picture is for presentation purposes only. Please refer to the detailed technical drawing at the end of the page.

### Interface

Interface	Incremental
-----------	-------------

### Outputs

Output Driver	Push-Pull (HTL)
Output Incremental	A, /A, B, /B, Z, /Z
Output Voltage Low Level Push-Pull (HTL)	< 2.5 V

### Electrical Data

Supply Voltage	5 - 30 VDC
Current Consumption	Typical 70 mA, Max. 150 mA
Reverse Polarity Protection	Yes
Short Circuit Protection	Yes

### Sensor

Technology	Optical
------------	---------

### Environmental Specifications

Protection Class (Shaft)	IP65
--------------------------	------

Data Sheet

Printed at 27-06-2019 05:06

# POSITAL

---

## FRABA



Protection Class (Housing)	IP65
Operating Temperature	-40 °C (-40 °F) - +80 °C (+176 °F)
Humidity	98% RH, no condensation

### Mechanical Data

Connection Cap Material	None
Housing Material	Aluminum
Housing Coating	No Coating
Flange Type	Through Hollow Shaft , $\varnothing$ 77 mm
Flange Material	Aluminum
Shaft Type	Through
Shaft Diameter	$\varnothing$ 25 mm (0.98")
Shaft Material	Stainless Steel V2A (1.4305, 303)
Max. Shaft Load	Axial 100 N, Radial 200 N
Rotor Inertia	$\leq$ 1000 gcm <sup>2</sup> [ $\leq$ 5.5 oz-in <sup>2</sup> ]
Friction Torque	$\leq$ 4 Ncm @ 20 °C (5.7 oz-in @ 68 °F)
Max. Permissible Mechanical Speed	$\leq$ 6000 1/min
Shock Resistance	$\leq$ 100 g (half sine 6 ms, EN 60068-2-27)
Vibration Resistance	$\leq$ 10 g (10 Hz - 2000 Hz, EN 60068-2-6)
Length	52,5 mm (2.07")
Weight	1000 g (2.20 lb)
Maximum Axial / Radial Misalignment	$\pm$ 0.5 mm / $\pm$ 0.3 mm

### Electrical Connection

Connection Orientation	Radial
Connector	M23, Male, 12 pin, CCW / left

### Certification

### Product Life Cycle

Product Life Cycle	New
--------------------	-----

# POSITAL

## FRABA

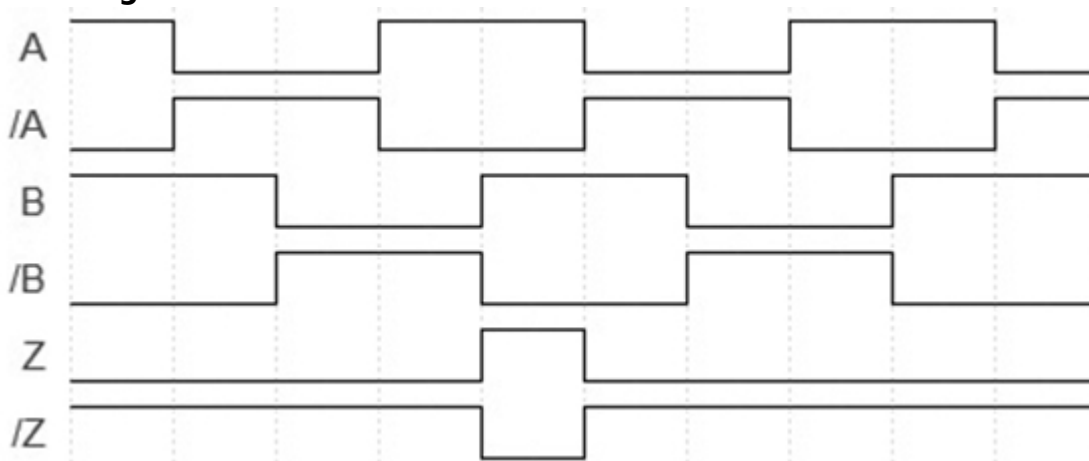


### Connection Plan

SIGNAL	PIN NUMBER
Power Supply	12
GND	10
A	5
/A	6
B	8
/B	1
Z	3
/Z	4
Shielding	Connector housing

Connector-View on Encoder

### Pulse Diagram



Data Sheet

Printed at 27-06-2019 05:06



Rotation Clockwise (seen on shaft)

### **Dimensional Drawing**

#### [2D Drawing](#)

#### **Accessories**

Connectors & Cables

M23, 12pin, Counter Clockwise, Female

Displays

AP20-00 Counter

AP20-D0 Counter (4 dig. o/p)

AP20-0A Counter (analog o/p)

AP20-DA Counter (4 dig. + analog o/p)

DiMod Counter (Relay o/p)

More

Torque Support

Tether 1025 (OCD-IN)

Stator Coupling 1109 (OCD-IN)

#### **Contact**



Contact Us

The picture and drawing are for general presentation purposes only. Please refer to the "Download" section for detailed technical drawings. All dimension in [inch] mm. © FRABA B.V., All rights reserved. We do not assume responsibility for technical inaccuracies or omissions. Specifications are subject to change without notice.