

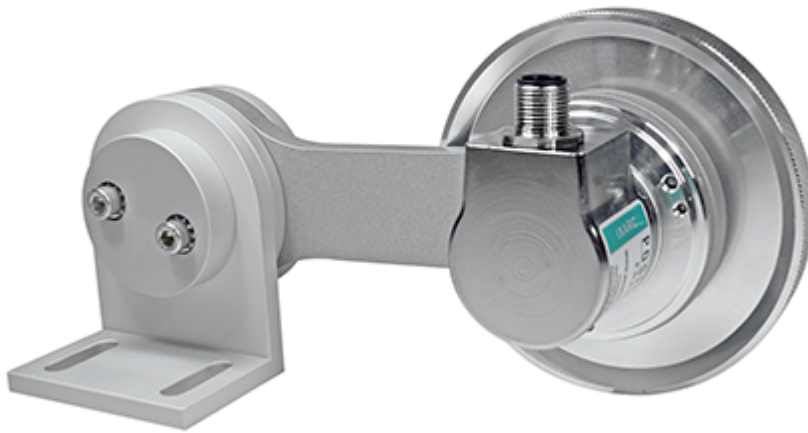


POSITAL

FRABA

Accessories

10053894 - Spring Loaded Pivot Arm 58mm



General Data

Intro	The new spring arm is suitable for use with measuring wheels from 300mm to 500mm in circumference on our standard encoders. Thanks to its highly flexible modular design, it can be installed in almost any position.
Flange Type	Clamping - Solid Shaft
Flange Diameter	58 mm
Material	Aluminium

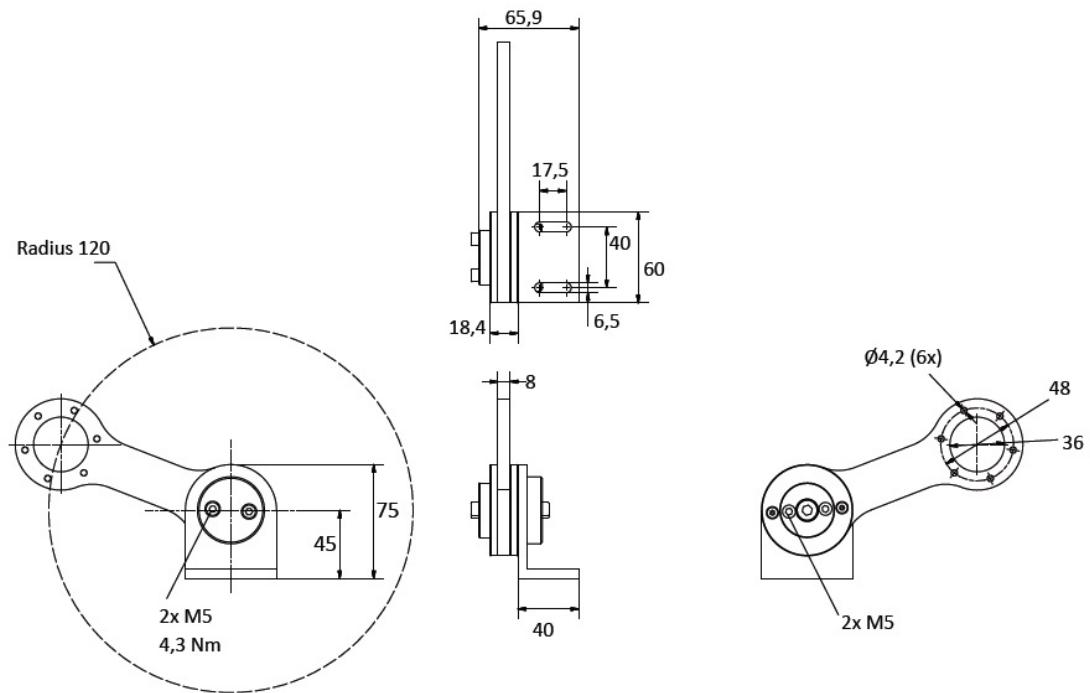
Mechanical Data

Operating Temperature	-30°C to 60°C / -22°F to 140°F
Weight	380 g



POSITAL

FRABA



Contact



Contact Us

All dimension in [inch] mm. This drawing and the information contained is for general presentation purposes only. Please refer to the "Download" section for detailed technical drawings. © FRABA B.V., All rights reserved. We do not assume responsibility for technical inaccuracies or omissions. Specifications are subject to change without notice.

Data Sheet
Printed at 13-04-2021 00:04